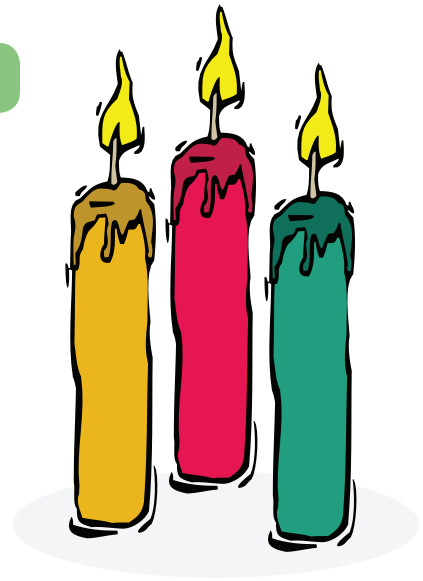


COLONIAL TIMES CANDLE MAKING

What You Need:

- Candle-making wax (beeswax, soy wax and other candle-making supplies are available at your local craft store)
- Old coffee can or another tall, deep, narrow melting pot (the deeper, the better!)
- Saucepot
- Non-waxed string or wick, cut into 12” strips (approximately)
- Candy thermometer
- Liquid candle dye, if desired



What You Do:

1. Fill the saucepot halfway with water, bring to a slow simmer (about 200°F to 210°F). For your safety, do not let the water come to a full boil.
2. Cut or break the wax into small pieces using a knife or a hammer. Place wax pieces into a coffee can or other tall, narrow, deep melting pot. Carefully place the can into the simmering water.
3. Melt wax until completely liquefied. Add liquid candle dye and stir, if desired. Remove from heat and let wax cool 1-2 minutes (to about 150°F – 165°F).
4. Once your wax is cooled, dip the wick into the wax. For the first dip, hold the wick in the wax for about 1 minute to prime it. Each dip thereafter should just be in and out. Wait briefly between dips – about 30 to 45 seconds – but don't allow the candle to cool completely.
5. Stir the wax occasionally so the heat is even throughout. You may need to reheat the wax during this process.
6. Keep dipping until your candle is the diameter you would like. This can take awhile, so be patient. Hang the candles to harden by clipping the wick to a hanger.
7. Before burning your candle, cut off the bottom end to make a flat surface and trim the wicks to about ¼”.

Other Candle Making Ideas & Tips!

- **Easy Votives!**
 - Once wax is completely melted and has been cooled slightly (step 3 above), pour into muffin tins to make votive candles. Use a toothpick to hold the wick in place, gently removing it as the wax begins to solidify.
 - Once the candles have solidified, to unmold, simply pry the edges of the candle with a dull knife – they should pop out easily. You could also freeze the muffin tin (again, after the candles have solidified) to unmold candles easily.
 - Instead of a muffin tin, you could also use hot/cold paper cups, which would make wider, taller candles. To unmold, simply cut away the cup once the wax is hardened.
- If making votives, to avoid a “sunken top” to your candle, use a toothpick to poke small holes in the wax surrounding the wick as it begins to solidify, which lets the trapped air escape. Then, pour a thin layer of melted wax over the top for a nice, even surface!

Important Safety Tips!

- Candle making should only be done with adult supervision.
- Never leave wax unattended.
- Do not overheat wax. At high temps (above 212°F) it could combust!
- A thermometer ensures proper temperatures.
- Always use a water bath or double boiler to melt wax – never heat directly over an open flame.
- Never pour wax down the drain – it is guaranteed to clog your pipes!

Safety Tips